

# Finding Optimal Longest Paths by Dynamic Programming in Parallel

Kai Fieger,<sup>1</sup> Tomáš Balyo,<sup>1</sup> Christian Schulz,<sup>2</sup> Dominik Schreiber<sup>1</sup>

<sup>1</sup>Karlsruhe Institute of Technology  
Karlsruhe, Germany

<sup>2</sup>University of Vienna, Faculty of Computer Science  
Vienna, Austria

fieger@ira.uka.de, tomas.balyo@kit.edu,  
christian.schulz@univie.ac.at, dominik.schreiber@kit.edu

## Abstract

We propose an exact algorithm for solving the longest simple path problem between two given vertices in undirected weighted graphs. By using graph partitioning and dynamic programming, we obtain an algorithm that is significantly faster than other state-of-the-art methods. This enables us to solve instances that were previously unsolved and solve hard instances significantly faster. Lastly, we present a scalable parallelization which yields the first efficient parallel algorithm for the problem.

## 1 Introduction

The longest path problem (LP) is to find a simple path (each vertex visited at most once) of maximum length between two given vertices of a graph, where length is defined as the number of edges or the total weight of the edges in the path. The problem is known to be NP-complete (Garey and Johnson 1979) and has several applications such as designing circuit boards (Ozdal and Wong 2006a; 2006b), project planning (Brucker 1995), information retrieval (Wong, Lau, and King 2005) or patrolling algorithms for multiple robots in graphs (Portugal and Rocha 2010).

In this paper we present the algorithm LPDP (Longest Path by Dynamic Programming) and its parallel version. LPDP makes use of graph partitioning and dynamic programming. Unlike many other approaches for NP-complete problems, LPDP is not an approximation algorithm – it finds an optimal longest path. Through experiments we compare LPDP to previous LP algorithms and evaluate the speedups achieved by the parallel algorithm.

## 2 Preliminaries

In the following we consider an *undirected* graph  $G = (V, E, \omega)$  with (symmetric) edge weights  $\omega : E \rightarrow \mathbb{R}_{\geq 0}$ ,  $n = |V|$ , and  $m = |E|$ . We extend  $\omega$  to sets, i.e.,  $\omega(E') := \sum_{e \in E'} \omega(e)$ .  $N(v) := \{u : \{v, u\} \in E\}$  denotes the neighbors of  $v$ . A *subgraph* is a graph whose vertex and edge sets are subsets of another graph. We call a subgraph *induced* if every edge among the included vertices is included.

A subset of a graph's vertices is called a *clique* if the graph contains an edge between every two distinct vertices of the subset. A *matching* is a subset of the edges of a graph where no two edges have any vertex in common. A sequence of vertices  $s \rightarrow \dots \rightarrow t$  such that each pair of consecutive vertices is connected by an edge, is called an *s-t path*. We say that  $s$  is the source and  $t$  is the target. A path is called *simple* if it does not contain a vertex more than once. The length of a path is defined by the sum of its edge weights. If the graph is unweighted, then edge weights are assumed to be one.

Given a graph  $G = (V, E, \omega)$  as well as two vertices  $s, t \in V$ , the *longest path* (LP) problem is to find the longest simple path from  $s$  to  $t$ . Another version of the LP problem is to find the overall longest simple path in the graph. However, the problem can be solved by introducing two vertices  $s, t$ , connecting them to all other vertices in the graph by edges of weight zero and then running algorithms tackling the LP problem on the modified instance.

A *k-way partition* of a graph is a division of  $V$  into *blocks* of vertices  $B_1, \dots, B_k$ , i.e.  $B_1 \cup \dots \cup B_k = V$  and  $B_i \cap B_j = \emptyset$  for  $i \neq j$ . A *balancing constraint* demands that  $\forall i \in \{1..k\} : |B_i| \leq L_{\max} := (1 + \epsilon) \lceil \frac{|V|}{k} \rceil$  for some imbalance parameter  $\epsilon$ . The objective is typically to minimize the total *cut*  $\sum_{i < j} \omega(E_{ij})$  where  $E_{ij} := \{\{u, v\} \in E : u \in B_i, v \in B_j\}$ .

### 2.1 Related Work

Previous work by Stern et al. (2014) mainly focuses on the possibility of applying algorithms that are usually used to solve the shortest path problem (SP) to the longest path problem. Stern et al. (2014) make clear why LP is so difficult compared to SP. Several algorithms are presented that are frequently used to solve SP or other minimization search problems. They are modified in order to be able to solve LP. The search algorithms are put into three categories: heuristic, uninformed and suboptimal. Each of the algorithms in the first two categories yields optimal solutions to the problem. The most relevant category for this paper is heuristic searches. Here, a heuristic can provide extra information about the graph or the type of graph. Heuristic searches require a heuristic function that estimates the remaining length of a solution from a given vertex of the graph. This can

give important information helping to prune the search space and to speed up the search. Stern et al. (2014) show that heuristic searches can be used efficiently for the longest path problem. Some examples of algorithms in this category are Depth-First-Branch-and-Bound (DFBnB) and A\*. Another category represents “uninformed” searches, which do not require any information other than what is already given in the definition of the problem. Examples from this category are Dijkstra’s algorithm or DFBnB without a heuristic. Modifying these algorithms to fit LP basically leads to brute force algorithms, which means that they still have to look at every possible path in the search space. Hence, these uninformed search strategies are not very beneficial for LP. The last category are suboptimal searches. The authors looked at a large number of these algorithms that only find approximations of a longest path.

A similar problem to LP called *Snake in the Box* (SIB) is the problem of finding the longest simple path in an  $n$ -dimensional hypercube. Additionally to the constraint of not allowing repeated vertices in the path it is required that for any two vertices  $u, v$  there is no edge between  $u$  and  $v$  unless  $u$  and  $v$  are adjacent in the path. Heuristic search LP algorithms can be adapted to efficiently solve SIB (Palombo et al. 2015) by designing SIB specific heuristics. However, these techniques cannot be transferred to solving the general LP problem since they rely on SIB specific heuristics and therefore these results are not relevant for our work.

The LP problem is related to the Traveling Salesperson Problem (TSP), which is a very well studied problem. There exist several exact algorithms and solvers for TSP, such as the Integer Linear Programming based exact solver Concorde (Applegate et al. 1994). TSP problems can be solved by translating them into LP problems and using an LP solver (Hardgrave and Nemhauser 1962). The translation is very efficient since it only adds one new vertex and at most  $n$  new edges, where  $n$  is the number of vertices of the TSP problem. This raises the question if we can solve TSP problems faster by using our new algorithm (after translating them to LP) than the state of the art TSP solver Concorde (Applegate et al. 1994). If we consider the standard TSP benchmark problems, i.e., the TSPLib collection (Reinelt 1991), the answer is no. The reason is that all the TSPLib benchmark problems are cliques and they remain cliques after translating them to LP (Hardgrave and Nemhauser 1962). This is very unfortunate, since our algorithm relies on graph partitioning, which is not very helpful for cliques. Perhaps for graphs that are not cliques and can be well partitioned our algorithm could outperform Concorde. On the other hand, translating LP to TSP is also possible (Lawler et al. 1985). Nevertheless, this translation introduces a lot of auxiliary vertices and edges. Indeed, the number of vertices increases by a factor of 6 and the number of edges is quadratic in the number of vertices (both original and auxiliary). This means that even problems that are solved in milliseconds using our new algorithm become unsolvable by Concorde after translating them to TSP (according to our experiments). In summary, we conclude that although TSP and LP can be reduced to each other it is best to solve each problem with its own dedicated solver.

### 3 Longest Path by Dynamic Programming

We now introduce the main contribution of our paper which is a new algorithm to tackle the longest path problem based on principles of dynamic programming. Hence, our algorithm is called “Longest Path by Dynamic Programming” (LPDP). Our algorithm solves the longest path problem (LP) for *weighted undirected graphs*.

#### 3.1 Exhaustive Depth First Search

A simple way to solve the longest path problem is *exhaustive depth-first search* (Stern et al. 2014). In regular depth-first search (DFS) a vertex has two states: marked and unmarked. Initially, all vertices are unmarked. The search starts by calling the DFS procedure with a given vertex as a parameter. This vertex is called the root. The current vertex (the parameter of the current DFS call) is marked and then the DFS procedure is recursively executed on each unmarked vertex reachable by an edge from the current vertex. The current vertex is called the parent of these vertices. Once the recursive DFS calls are finished we backtrack to the parent vertex. The search is finished once DFS backtracks from the root.

```

Search exhaustiveDFS( $v$ )
  if  $v$  is unmarked then
    mark  $v$ ;
    foreach  $\{v, w\} \in E$  do
      | exhaustiveDFS( $w$ );
    end
    unmark  $v$ ;
  end

```

**Algorithm 1:** Exhaustive depth first search. In order to solve LP we start this search from the start node and update the best found solution each time the (unmarked) target node is found.

Exhaustive DFS is a DFS that unmarks a vertex upon backtracking. In that way every simple path in the graph starting from the root vertex is explored. The LP problem can be solved with exhaustive DFS by using the start vertex as root. During the search the length of the current path is stored and compared to the previous best solution each time the target vertex is reached. If the current length is greater than that of the best solution, it is updated accordingly. When the search is done a path with maximum length from  $s$  to  $t$  has been found. If we store the length of longest path for each vertex (not just the target vertex) then all the longest simple paths from  $s$  to every other vertex can be computed simultaneously.

It is easy to see, that the space complexity of exhaustive DFS is the same as regular DFS – linear in the size of the graph. However, the time complexity is much worse. In the worst case – for a clique with  $n$  vertices – the time complexity is  $\mathcal{O}(n!)$  since every possible simple path is explored, which corresponds to all the permutations of the vertex set. If the maximum degree of the graph is  $d$  then the running time can be bound by  $\mathcal{O}(d^n)$ , where  $n$  is the number of vertices.

### 3.2 Algorithm Overview

Our algorithm is based on dynamic programming: roughly speaking, we partition the graph into blocks, define subproblems based on the blocks and then combine the solutions into a longest path for the original problem. In order to be able to divide LP into subproblems, we first generalize the problem:

**Given a graph**  $G = (V, E, \omega)$ , two vertices  $s, t \in V$ , two sets  $B \subseteq V$  and  $P \subseteq \{\{u, v\} \mid u, v \in b(B)\}$  where  $b(B) := \{v \in B \mid v = s \vee v = t \vee \exists \{v, w\} \in E : w \notin B\}$  are the *boundary nodes* of  $B$ , **find a simple path** from  $a$  to  $b$  in the subgraph induced by  $B$  for every  $\{a, b\} \in P$ . Find these paths in such a way that they do not intersect and have the maximum possible cumulative weight. See Figure 1 for an example.

We make the following Observations about this problem:

1. A pair  $\{a, a\} \in P$  is possible and results in a path of weight 0 that consists of one node and no edges. But otherwise the problem is unsolvable if any node occurs twice in  $P$ . This would result in two intersecting paths as they would have a common start or end node.
2. We calculate an upper bound on the number of all solvable  $P$  in the following way: We transform  $P$  into two sets  $(M, X)$ .  $\{x, y\} \in P \wedge x \neq y \iff \{x, y\} \in M$  and  $\{x, x\} \in P \iff x \in X$ . We interpret  $M$  as a set of edges in the clique of the boundary nodes  $b(B)$ . It follows from Observation 1 that  $M$  represents a matching (set of edges without common vertices) in that clique. The numbers of all possible matchings in a clique of size  $n$  are also known as the telephone numbers or involution numbers (Knuth 1973):  $T(n) := \sum_{k=0}^{\lfloor n/2 \rfloor} \frac{n!}{2^k (n-2k)! k!}$ . Each element of the sum equals the number of matchings with  $k$  edges. Any of the  $n - 2k$  boundary nodes that are left are either in  $X$  or not. This leads to  $2^{n-2k}$  possibilities for  $X$  per  $k$ -edge matching  $M$ . This means that there are at most  $\sum_{k=0}^{\lfloor n/2 \rfloor} \frac{n! 2^{n-2k}}{(n-2k)! k!}$  possible, solvable  $P$ . It is the exact number if the subgraph induced by  $B$  is a clique.
3. If the problem is unsolvable for a  $P$  it is also unsolvable for any  $P' \supseteq P$ .
4. A solution of the problem also induces a solution to the problem for any  $B' \subseteq B$  and a  $P'$ : Restricting the solution to nodes of  $B'$  results in non-intersecting, simple paths in the subgraph of  $B'$ . These paths start and end in boundary nodes of  $B'$  inducing the set  $P'$ .

These paths are the solution to the problem for  $B'$  and  $P'$ . *Proof:* Otherwise we could start with the solution for  $B$  and  $P$ , remove all paths in the subgraph of  $B'$  and replace them with the solution for  $B'$  and  $P'$ . We would obtain a solution for  $B$  and  $P$  with a higher cumulative weight than before. This is impossible.

LP is a special case of this problem where  $B = V$  and  $P = \{\{s, t\}\}$ . Observation 4 is the basis of the LPDP algorithm as it allows us to recursively divide LP into subproblems. LPDP requires a hierarchical partitioning of the

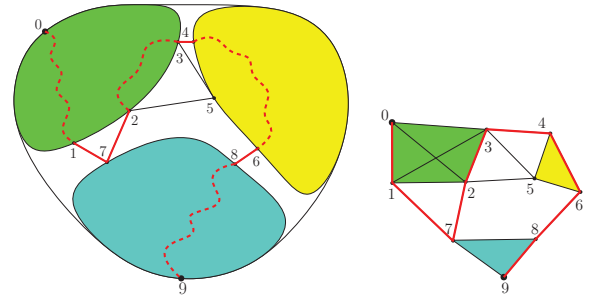


Figure 1: Left shows an example of a graph that is partitioned into three blocks. The nodes 0 to 9 are the boundary nodes of the blocks. The edges between them are the boundary edges. A possible longest path from 0 to 9 is shown in red. The right graph is the auxiliary graph that is constructed by the LPDP algorithm. The path that corresponds to the one on the left is shown. The induced boundary node pairs for the blocks are:  $P_{green} = \{\{0, 1\}, \{2, 3\}\}$ ,  $P_{yellow} = \{\{4, 6\}\}$ ,  $P_{blue} = \{\{7, 7\}, \{8, 9\}\}$

graph. Level 0 represents the finest level of partitioning. On each higher level we combine a group of blocks from the lower level into a single larger block. On the highest level we are left with a single block  $B = V$ . We solve our problem for each of these blocks and any possible  $P$ : We start by calculating the solutions for each block of level 0. We then calculate the solutions for a block on level 1 by combining the solutions of its level 0 sub-blocks. This is repeated level by level until we calculated all solutions for the block  $B = V$ , namely the solutions for  $P = \{\{s, t\}\}, \{\}, \{\{s, s\}\}, \{\{t, t\}\}$  and  $\{\{s, s\}, \{t, t\}\}$ . The latter four are trivial (see Observation 1) and do not have to be calculated. With a solution for  $P = \{\{s, t\}\}$  we solve LP.

The next section shows how we calculate the solutions for one block  $B$  with the help of its sub-blocks from the level below. The initial solutions for the blocks on level 0 can be calculated with the same algorithm. In order to do this we interpret each node  $v$  as a separate sub-block. We know the solutions for each of these sub-blocks ( $P = \{\}$  or  $\{\{v, v\}\}$ ). So we can use the same algorithm to calculate solutions for the blocks on level 0.

### 3.3 Combining Solutions

Let  $P_S$  be the set of boundary node pairs for any set of nodes  $S$ . Given is the subset of nodes  $B$  of the graph and a partition  $B_1, \dots, B_k$  of  $B$  ( $B_1 \cup \dots \cup B_k = B$  and  $B_i \cap B_j = \emptyset$  for  $i \neq j$ ). We already know the solution of the problem for each  $B_i$  and every possible  $P_{B_i}$ . We calculate the solution for  $B$  and every possible  $P_B$  with the following algorithm: We construct an auxiliary graph  $G' = (V', E', \omega')$  with  $V' = \bigcup_{i=1}^k b(B_i)$ .  $E'$  contains all edges  $\{v, w\} \in E$  where  $v \in b(B_i)$  and  $w \in b(B_j)$  (with  $i \neq j$ ). We call these edges *boundary edges*. They keep the weight they had in  $G$ . We also create a clique out of the boundary nodes of every  $B_i$ . These new edges have zero weight.

In order to calculate the solutions for  $B$ , we start a modified version of the exhaustive DFS on every boundary node of  $B$ . Pseudocode of this search algorithm is shown in Algorithm 2. Compared to exhDFS it works with multiple paths. The first path starts from the starting boundary node. Once another boundary node of  $B$  is reached, the current path can be completed. Then search starts a new path from another boundary node. At any point of the search  $P_B$  is equivalent to the boundary node pairs induced by the completed paths. The sets  $P_{B_i}$  are maintained the following way: The paths contain an edge  $\{v, w\}$  of the  $B_i$ -clique  $\iff \{v, w\} \in P_{B_i}$ . If the paths contain a node  $v \in B_i$  but no edge  $\{v, w\}$  of the  $B_i$ -clique:  $\{v, v\} \in P_{B_i}$ . During the search we do not traverse an edge that would induce a  $P_{B_i}$  without a solution. Further traversal of a path with an unsolvable  $P_{B_i}$  only leads to  $P'_{B_i} \supseteq P_{B_i}$  which is still unsolvable (as already seen in Observation 3).

Each time we complete a path, we have calculated a candidate for the solution to  $B$  and  $P_B$ . The weight of this candidate is the weight of the solution of each block  $B_i$  and the induced  $P_{B_i}$  plus the weight of all boundary edges in the paths. Until now, no  $P_B$  found by the search contains a pair  $\{v, v\}$  as we do not allow a path to end in its starting boundary node. This way  $P_B$  is equivalent to a  $M$  and  $X = \emptyset$  according to the representation in the Observation 2. So when we complete a path, we additionally go through all possible sets  $X$  (while modifying the sets  $P_{B_i}$  accordingly) and update the best found solution for these candidates as well. This leads to a faster search in the auxiliary graph compared to letting a path end in its starting node.

An important optimization which can be seen in Algorithm 2 is that we only allow a path to end in a boundary node with a higher id than its starting boundary node. Additionally a path can only start from a boundary node with a higher id than the starting node of the previous path. The first optimization essentially sorts the two vertices of each pair  $\{x, y\} \in P$ . The second then sorts these pairs. This results in an order and a direction in which we have to search each path in  $P$ . This avoids unnecessary traversal of the graph.

In the worst case scenario each block on every level of the partition hierarchy is a clique. According to Observation 2 this means we have to store  $\sum_{k=1}^{\lfloor n/2 \rfloor} \frac{n!2^{n-3k}}{(n-2k)!k!}$  solutions for each block with  $n$  vertices. Note that we start the sum with  $k = 1$ . The element of the sum with  $k = 0$  represents the number of all  $P$  that do not contain any  $\{x, y\}$  where  $x \neq y$ . These solutions always exist and have weight 0. We do not have to store them.

In our implementation we use a hash table for every block  $B$  to store its solutions. The hash table uses  $P_B$  as the key and stores the induced  $P_{B_i}$  and the overall weight as a value. On the lowest level we store the paths instead. When the algorithm is finished we recursively unpack the longest path by looking up each  $P_{B_i}$  in the hash table of its block.

## 4 Parallelization

The parallelization of the LPDP algorithm is done in two ways. First, multiple blocks can be solved at the same time.

### Search LPDP-Search( $v$ )

```

if  $v$  unmarked &  $\forall i \exists$  a solution for  $B_i$  and  $P_{B_i}$ 
then
  mark  $v$ ;
  if  $v \in b(B)$  then
    if already started a  $\{a, \cdot\}$ -path then
      if  $v > a$  then
         $\{a, v\} \in P_B$ ;
        foreach  $w \in b(B)$  where  $w > a$ 
          do
            LPDP-Search( $w$ );
          end
         $\{a, v\} \notin P_B$ ;
      end
    else
      start a  $\{v, \cdot\}$ -path;
    end
  end
  foreach  $\{v, w\} \in E$  do
    LPDP-Search( $w$ );
  end
  unmark  $v$ ;
end

```

**Algorithm 2:** Basic search algorithm that is used to search the auxiliary graphs.

Additionally, LPDP-Search from Algorithm 2, which is used to solve a block, can also be parallelized.

### 4.1 Solving Multiple Blocks

A block is only dependent on its sub-blocks. We can solve it once all of its sub-blocks have been solved. No information from any other block is needed. This allows us to solve multiple blocks independently of each other. The question is how effective this form of parallelism can be. For example: If  $p\%$  of a problem's serial runtime is spent solving a single block, solving multiple blocks in parallel cannot achieve a speedup higher than  $\frac{100}{p}$ . In order to test this we ran the serial LPDP solver on the set of problems that is used in the experiment section. LPDP had a time limit of 64 minutes to solve a problem. We only looked at problems that took more than 5 seconds to solve.

For each of the solved problems the plot in Figure 2 shows the percentage of the problem's runtime that is spent solving its most difficult block. The problems are sorted from lowest to highest percentage. From this plot we can see that achieving speedups over 2 would be impossible for most of the problems. In fact for almost half of the shown problems a single block makes up over 80% of their runtime. This means that parallelizing the execution of a single block is far more important than solving multiple blocks at the same time. The next section explains how this is done.

### 4.2 Parallelizing LPDP-Search

In order to solve a block, LPDP starts the search shown in Algorithm 2 from each boundary vertex of the block (except

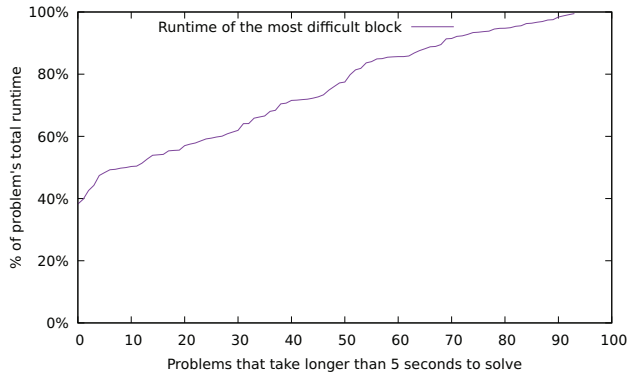


Figure 2: The plot is restricted to the problems that took the serial LPDP solver more than 5 seconds. For each of these problems the plot shows the percentage of the problem’s runtime that is spent on solving its most difficult block. The problems are sorted from lowest to highest percentage.

the last). We could parallelize the solving of a block simply by running multiple of these searches at the same time. There are multiple problems with this approach: We could only use up to  $n - 1$  threads when solving a block with  $n$  boundary vertices. This limits the speedup that could be achieved to  $\frac{1}{n-1}$ . Additionally, because of the optimization explained in Section 3.3, the searches that start from boundary vertices with lower ids usually take much longer than those started from higher boundary vertices. This would lead to bad load balancing and limit the possible speedup even further.

An approach that does not have these problems is inspired by the “Cube and Conquer” approach for SAT-Solving that was presented by Heule et al. (2011). In this paper a SAT formula is partitioned into many subformulas. These subformulas can be solved in parallel. We can do the same for LPDP by partitioning the search space of LPDP-Search into many disjoint branches. We do this by running LPDP-Search from each boundary vertex with a limited recursion depth. Every time the search reaches a certain level of recursion the search stores its current context in a list and returns to the previous recursion level. Figure 3 shows an example of this. We can see a LPDP-Search limited to 3 recursions in red. A stored context represents all the data that allows us to continue the search at this point later on. On higher recursion levels the search works the same as before. The created list of contexts is then used as a queue. Each element of the queue represents a branch of the search that still has to be executed. One such branch can be seen in blue in Figure 3.

We execute these branches in parallel. Each time a thread finishes one branch it receives the next branch from the top of the queue. This automatically results in a form of load balancing as threads that execute faster branches simply end up executing more branches. In order for this to work well we need a large number of branches. But generating the branches should also not take too long. We have to choose the recursion depth limit accordingly. This could be done by initially choosing a small recursion depth limit. If the re-

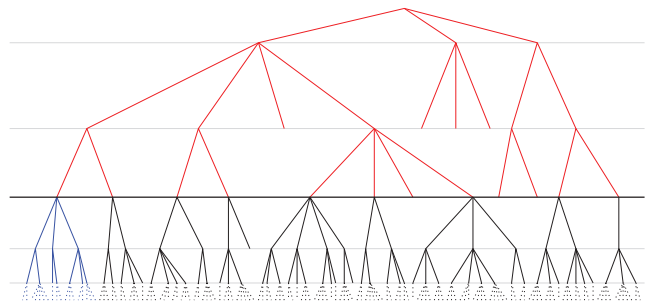


Figure 3: This tree is an example that is generated through the recursion of an LPDP-Search. The horizontal lines are the different levels of recursion. The root of the tree is the initial call of LPDP-Search(). Every edge represents a function call to LPDP-Search(). For example the initial LPDP-search() calls itself 3 times. This results in the 3 edges to the first horizontal line (first level of recursion). The call represented by the left edge calls LPDP-Search() 4 times. This results in 4 branches to the second horizontal line. The whole tree represents a full LPDP-Search. In red we can see a LPDP-Search that is limited to 3 levels of recursion.

sulting list of branches is too small, we repeat the process with a higher and higher limit until the list has the necessary size. These repeats should not take too long as a small list of search branches would also indicate a short runtime of the restricted search. If we want to prevent the repeats, we could also continue the restricted LPDP-Search from each of the branches in the list until a higher recursion depth is reached. In the experiments none of this was done. Instead the recursion depth limit was set to the fixed value 5. This has proven to be sufficient. Generating the branches only took a negligible amount of time but still resulted in good load balancing.

This form of parallelization requires a certain amount of synchronization between the threads. The serial implementation of LPDP uses hash tables to store the solutions for a block. Several threads can try to modify the same hash table entry at the same time. Introducing a concurrent hash table<sup>1</sup> solves this problem.

## 5 Experimental Evaluation

**Methodology.** We have implemented the algorithm described above using C++ and compiled it using gcc 4.9.4 with full optimizations turned on (`-O3` flag). Our implementation is freely available in the Karlsruhe Longest Paths package (KaLP) under the GNU GPL v2.0 license (Balyo, Fieger, and Schulz 2019). For partitioning the input graph we use the partitioner KaHIP (Sanders and Schulz 2013). We use multiple implementations provided by Stern et al. (2014) for comparison: **Exhaustive DFS** is the naive brute-force approach as well as the **A\*** algorithm and the **DFBnB** solver. We run each algorithm and input pair with a time limit of one hour. Experiments were run on a machine that is equipped with four Intel® Xeon® Processors E5-4670 (2.4 GHz with

<sup>1</sup>In our implementation we use the concurrent hash table from the TBB (Robison 2011) library.

Solver	Number of Solved Instances			
	Grids	Roads	Words	Total
A*	34	70	40	144
DFBnB	37	85	46	168
Exhaustive DFS	31	72	44	147
LPDPe	296	144	58	498
LPDPs	300	144	59	503

Table 1: The number of instances solved within the time limit of one hour by the tested solver configurations for each collection of benchmark problems and in total.

8 cores each – 32 cores in total) and 512 GB RAM.

We present multiple kinds of data: first and foremost, we use *cactus plots* in which the number of problems is plotted against the running time. The plot shows the running time achieved by the algorithm on each problem. The running times are sorted in ascending order for each algorithm. The point  $(x, t)$  on a curve means that the  $x$ th fastest solved problem was solved in  $t$  seconds. Problems that were not solved within the time limit are not shown. In addition we utilize tables reporting the number of solved problems as well as *scatter plots* to compare running times of two different solvers  $A$ ,  $B$  by plotting points  $(t_A, t_B)$  for each instance.

**Benchmark Problems.** We mainly use instances similar to the ones that have been used in previous work by Stern et al. (2014), i.e. based on mazes in grids as well as the road network of New York. Additionally we use subgraphs of a word association graph (Boldi and Vigna 2004; Boldi et al. 2011). The graph describes the results of an experiment of free word association performed by more than 6000 participants. Vertices correspond to words and arcs represent a cue-target pair.

The first set of instances is generated by using mazes in  $N \times N$  grids of square cells with a given start and target cell. One can move to adjacent cells horizontally or vertically but only if the cell is not an obstacle. The goal is to find the longest simple path from the start cell to the target cell. We represent the grids as graphs: for every free cell we insert a vertex and we add an edge with weight 1 between any two vertices, whose cell are horizontally or vertically adjacent to each other. We generate the grids as Stern et al. (2014): the top left and bottom right cell are the start and target cell. Random cells of the grid are consecutively made into obstacles until a certain percentage  $x \in \{30\%, 40\%\}$  of all cells is filled. Afterwards a path between the start and target is searched for to make sure that a solution of the longest path problem exists. The sizes of the used mazes range from  $10 \times 10$  up to  $120 \times 120$  with 300 instances in total.

The second and third set of instances are subgraphs of the road network of New York as well as subgraphs of the word association graph (Boldi and Vigna 2004; Boldi et al. 2011), respectively. A subgraph is extracted as follows: we start a breadth-first search from a random vertex of the network and stop it when a certain number of vertices is reached. The vertices touched by the breadth-first search induce the in-

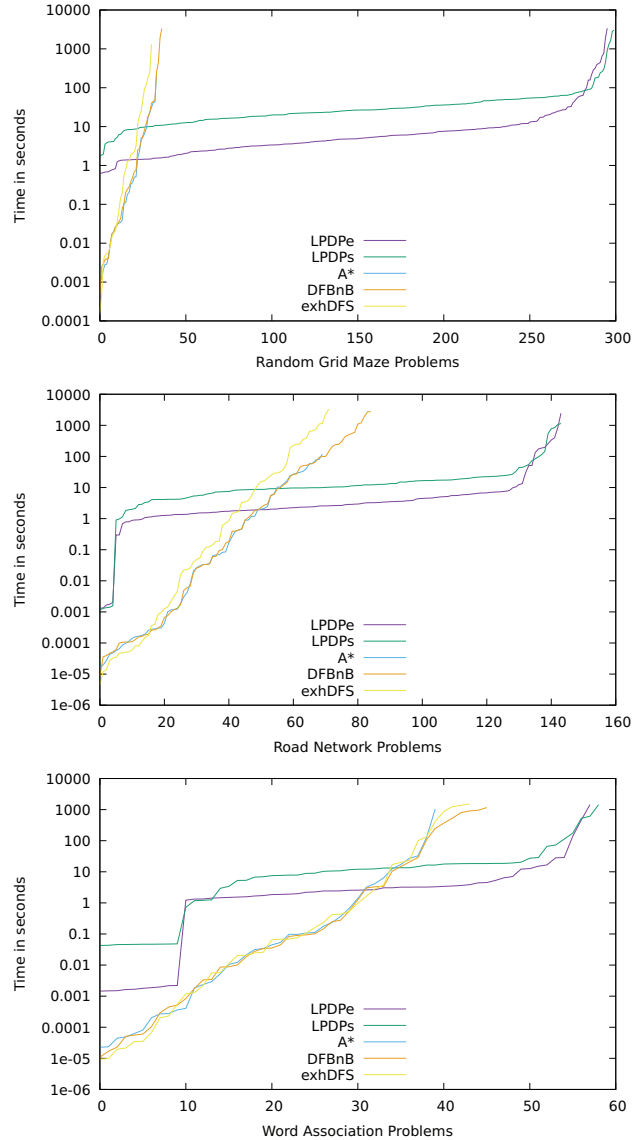


Figure 4: Cactus plots for the three kinds of benchmark problems comparing previous algorithms to LPDP with three different partitioning configurations. Running times include time spent on partitioning for the LPDP variants.

stance. One of the touched vertices is randomly chosen as the target-vertex. The sizes of the road network subgraphs are  $2, 4, \dots, 300$  vertices, i.e., 150 instances in total. As for the word association benchmark set, we have ten instances for each of the six sizes (10, 20, ..., 60 vertices) – in total 60 instances.

## 5.1 Experimental Results

We now compare A\*, DFBnB, and exhDFS presented by Stern et al. (2014) to our algorithm LPDP using two configurations. Our configurations differ in the amount of time that we spent on partitioning the input instance. We use either the eco/default configuration of KaFFPa (*LPDPe*), which is a good trade off between solution quality and running

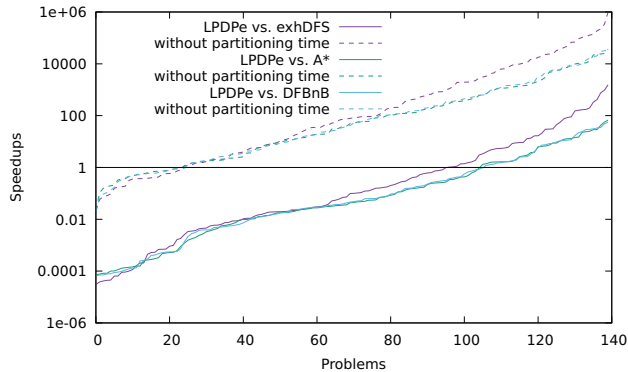


Figure 5: Speedup of LPDPe in relation to previous LP algorithms on problems that were solved within the time limit by each of the tested algorithms. The dashed lines show the speedup if we only measure the execution time of the LPDP algorithm and ignore partitioning time.

time, or the strong configuration of KaFFPaE which aims at better partitions while investing more time for partitioning (*LPDPs*). In the latter case, we set the amount of block imbalance to 10%. Note that *LPDPs* spends much more time in the graph partitioning phase of the algorithm than *LPDPe*. All results reporting running time in this paper include the time spent for partitioning.

Figures 4–6 and Table 1 summarize the results of our experiments. It is apparent from the cactus plots in Figure 4 that both configurations of *LPDP* significantly outperform the previous algorithms for each kind of tested benchmark except for very easy problems. These problems are typically solved under a few seconds by any of the algorithms. In these cases, most of the time of our algorithm is spent in the partitioning phase. Moreover, our *LPDP* algorithms can solve significantly more problems, which can be seen in the cactus plots as well as in Table 1.

There are 140 problem instances that were solved by all solvers within the time limit. In Figure 5 we provide the speedup of *LPDPe* against the three original LP algorithms. For most of these instances the speedup is actually below 1, but from our data we know that this happens only for easy problems (solvable within a couple of seconds by each solver). The slowdown on these easy instances is due to the overhead caused by partitioning. Therefore Figure 5 also shows the speedups if we only count the execution time of the *LPDP* algorithm itself while ignoring the partitioning time. We see that *LPDP* itself quickly outperforms the other solvers. Speedups below 1 only happen for very easy problems. If we include the partitioning time, using *LPDPe* only eventually pays off as the other solvers reach their limit. A similar plot for *LPDPs* is not included as it looks very similar. The only significant difference is that *LPDPs* takes even longer to outperform the other algorithms. This is expected as *LPDPs* intentionally spends more time partitioning the graph.

The differences in running time are highest for the grid maze instances and lowest for word association graph prob-

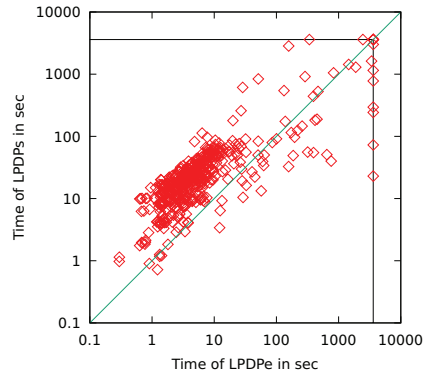


Figure 6: A scatter plot comparing running times of *LPDPe* and *LPDPs* on the entire benchmark set. Points above (below) the green line represent instances where *LPDPe* (*LPDPs*) was faster. Points on the right (top) blue line represent instances that were not solved within the time limit of one hour by *LPDPe* (*LPDPs*).

lems. We believe this is due to the structure of these graphs, in particular, how well they can be partitioned to loosely connected subgraphs. Our algorithm excels on problems that can be successfully partitioned but is competitive on all kinds of graphs.

As of evaluating our algorithm with different partitioning configurations, we see that spending extra time on partitioning to get better solutions pays off. In particular, *LPDPs* is able to solve more instances. Especially if the instance appears to be hard it is worth while to invest more time in partitioning. Additionally, this depends on how well the graphs can be partitioned (highest for grid mazes, smallest for word association).

Looking at the scatter plot in Figure 6, we can see that *LPDPe* is faster for most of the instances but has significantly more unsolved instances. Nevertheless, there are two instances that are solved by *LPDPe* and not by *LPDPs*. This shows that spending more effort on the partitioning does not necessarily increase the number of solved instances.

## 5.2 Parallel Speedups

In order to measure the speedups achieved through parallelization, we ran the solver multiple times on each problem. We first ran the serial solver (1 thread) and then doubled the number of threads with each additional run. This was done until 64 threads, the maximum number of threads that the hardware can support, were reached. It is to mention that the computer only has 32 cores. Simultaneous multi-threading is used to support 2 simultaneous threads per core. This should reduce the maximum achievable speedup as two threads have to share the resources of one core. The serial solver had 64 minutes to solve each problem. The parallel solvers only had a time limit of 32 minutes.

Table 2 gives a first overview of the results. In the second column of the table we see the number of problems that were solved by each of the parallel solvers. As expected

Threads	Parallel Solved	Both Solved	Speedup All			Speedup Big		
			Avg.	Tot.	Med.	Avg.	Tot.	Med.
2	618	618	1.038	1.360	1.031	1.335	1.363	1.331
4	624	621	1.392	2.623	1.224	2.542	2.638	2.564
8	627	621	1.788	4.833	1.189	4.707	4.913	4.720
16	628	621	2.257	8.287	1.127	8.097	8.569	8.208
32	629	621	2.344	10.714	0.987	11.272	11.553	11.519
64	633	621	2.474	11.691	0.889	15.180	13.512	14.665

Table 2: Parallel runtime speedup table: the serial version of LPDP had a time limit of 64 minutes for each problem. All parallel versions had a time limit of 32 minutes. A solver with  $n$  threads considers a problem “big” if the serial solver took more than  $n \cdot 5$  seconds to solve it.

this number increases as we increase the number of threads. With the 64 thread solver 15 problems remain unsolved. The third column shows the number of problems that were also solved by the serial algorithm. With 2 threads we initially solve fewer problems than with one. This is because of the decreased time limit given to the parallel solvers. From now on we will only look at this subset of problems as only they can be used to calculate the speedups achieved through parallelization. The average, total and median speedups can be seen in column 4, 5 and 6. The total speedup of a solver is how much faster it solved all the problems compared to the serial solver. For 2 threads we see a total speedup of 1.360. Doubling the thread count results in an increase of the total speedup by 92.9%, 84.3%, 71.5%, 29.3% and 9.1%. We see that the initial jump from 2 to 4 threads almost doubles the speedup. The speedup gain per jump then slightly decreases until 16 threads are reached. At this point the total speedup is roughly half the number of threads (8.287). Further increasing the number of threads has a smaller effect on the total speedup. 32 threads still result in a gain of 29.3%. Especially the final jump from 32 to 64 threads with 9.1% only does little. We end with a total speedup of 11.691.

When looking at the average speedup per problem we see that it stays below 2.5 for all solvers. This is vastly different from the total speedup. This indicates that many problems in our benchmark set are relatively easy to solve. The overhead of the parallelization makes up a large part of the runtime for these problems. This keeps the average speedup small. The total speedup on the other hand is dominated by a smaller number of difficult problems which make up a large part of the total runtime of the benchmark.

The same thing can be seen when looking at the median speedups. Initially there is almost no speedup. With 4 threads the median speedup increases, but then starts to drop again. The 32 and 64 thread solver even have a median speedup below 1. This means that they are slower than the single threaded solver for at least half of the problems. From the data we know that none of these are difficult problems. LPDP solves them so fast that they do not warrant the necessary runtime overhead of parallelization.

In order to filter out these problems that are too easy to benefit from parallelization we restrict ourselves to “big” problems. For a solver with  $n > 1$  threads we call a problem big if the serial solver took more than  $5 \cdot n$  seconds to solve it. So 10, 20, 40, 80, 160 and 320 seconds for 2, 4, 8,

16, 32 and 64 threads. The threshold for a big problem increases with the number of threads as a higher thread count only pays off for more difficult problems. This can be seen in the steady decrease in the median speedup from 2 threads onwards.

The average, total and median speedups for big problems can be seen in column 7, 8 and 9 of the table. The total speedups for big problems are higher overall. The percentage gains when doubling the number of threads also are higher: 93.5%, 86.2%, 74.4%, 34.8% and 17.0%. Especially the last jump from 32 to 64 threads now increases the total speedup by 17.0% compared to the 9.1% before. The biggest difference can be seen for the average and median speedups. Now they are relatively similar to the total speedups. An interesting point is that for all numbers of threads except for 64 the average and median speedup is slightly lower than the total speedup. For 64 threads both are higher than the total speedup. This means that some of the easier big problems give us higher speedups than the more difficult ones.

## 6 Conclusion

We presented an exact algorithm for the longest path (LP) problem in undirected graphs which is based on dynamic programming and graph partitioning. Experiments show that our new algorithm is faster for nontrivial problems than the previous exact algorithms and can solve significantly more benchmark instances if a time limit per instance is given.

We also presented and evaluated a parallel version of the algorithm in a shared-memory setting. We observed speedup for up to 64 solver threads. For future work we plan to develop a parallel version for computer clusters using message passing protocols.

**Acknowledgments** This work was partially supported by DFG grant SCHU 2567/1-2..

## References

- Applegate, D.; Bixby, R.; Chvátal, V.; and Cook, W. 1994. Finding cuts in the TSP: a preliminary report. *The Mathematical Programming Symposium 1994, Ann Arbor, Michigan*.
- Balyo, T.; Fieger, K.; and Schulz, C. 2019. KaLP – Karlsruhe Longest Paths Homepage. <http://algo2.iti.kit.edu/kalp/index.html>.



- Boldi, P., and Vigna, S. 2004. The WebGraph framework I: Compression techniques. In *Proc. of the Thirteenth International World Wide Web Conference (WWW 2004)*, 595–601. Manhattan, USA: ACM Press.
- Boldi, P.; Rosa, M.; Santini, M.; and Vigna, S. 2011. Layered label propagation: A multiresolution coordinate-free ordering for compressing social networks. In Srinivasan, S.; Ramamritham, K.; Kumar, A.; Ravindra, M. P.; Bertino, E.; and Kumar, R., eds., *Proceedings of the 20th international conference on World Wide Web*, 587–596. ACM Press.
- Brucker, P. 1995. *Scheduling Algorithms*. Secaucus, NJ, USA: Springer-Verlag New York, Inc.
- Garey, M. R., and Johnson, D. S. 1979. *Computers and Intractability: A Guide to the Theory of NP-Completeness*. New York, NY, USA: W. H. Freeman & Co.
- Hardgrave, W., and Nemhauser, G. L. 1962. On the relation between the traveling-salesman and the longest-path problems. *Operations Research* 10(5):647–657.
- Heule, M. J.; Kullmann, O.; Wieringa, S.; and Biere, A. 2011. Cube and conquer: Guiding CDCL SAT solvers by lookaheads. In *Haifa Verification Conference*, 50–65. Springer.
- Knuth, D. E. 1973. *The Art of Computer Programming, Volume 3: Sorting and Searching*. Addison Wesley Longman Publishing Co., Inc.
- Lawler, E. L.; Lenstra, J. K.; Kan, A. R.; and Shmoys, D. B. 1985. *The traveling salesman problem. A guided tour of combinatorial optimisation*. John Wiley & Sons.
- Ozdal, M. M., and Wong, M. D. F. 2006a. Algorithmic study of single-layer bus routing for high-speed boards. *IEEE Transactions on Computer-Aided Design of Integrated Circuits and Systems* 25(3):490–503.
- Ozdal, M. M., and Wong, M. D. F. 2006b. A length-matching routing algorithm for high-performance printed circuit boards. *IEEE Transactions on Computer-Aided Design of Integrated Circuits and Systems* 25(12):2784–2794.
- Palombo, A.; Stern, R.; Puzis, R.; Felner, A.; Kiesel, S.; and Ruml, W. 2015. Solving the snake in the box problem with heuristic search: First results. In *Eighth Annual Symposium on Combinatorial Search*.
- Portugal, D., and Rocha, R. 2010. MSP algorithm: Multi-robot patrolling based on territory allocation using balanced graph partitioning. In *Proceedings of the 2010 ACM Symposium on Applied Computing, SAC '10*, 1271–1276. New York, NY, USA: ACM.
- Reinelt, G. 1991. TSPLIB – a traveling salesman problem library. *ORSA journal on computing* 3(4):376–384.
- Robison, A. D. 2011. Intel® threading building blocks (TBB). In Padua, D. A., ed., *Encyclopedia of Parallel Computing*. Springer. 955–964.
- Sanders, P., and Schulz, C. 2013. Think Locally, Act Globally: Highly Balanced Graph Partitioning. In *Proceedings of the 12th International Symposium on Experimental Algorithms (SEA'13)*, volume 7933 of LNCS, 164–175. Springer.
- Stern, R.; Kiesel, S.; Puzis, R.; Feller, A.; and Ruml, W. 2014. Max is more than min: Solving maximization problems with heuristic search. In *Proceedings of the Seventh Annual Symposium on Combinatorial Search (SoCS 2014)*.
- Wong, W. Y.; Lau, T. P.; and King, I. 2005. Information retrieval in P2P networks using genetic algorithm. In *Special Interest Tracks and Posters of the 14th International Conference on World Wide Web, WWW '05*, 922–923. New York, NY, USA: ACM.